



Rethinking the Teaching & Learning Mission in a Post-COVID-19 World

Immediate Challenges and Longer-term Opportunities

FSLI Encore
November 7, 2020

The Post-Pandemic University

- Leading through Uncertainty
- Higher Education Landscape
- Emerging Enrollment Challenges
- Teaching & Learning Reimagined
- Emerging Trends
- Bridging Accessibility and Success Gaps



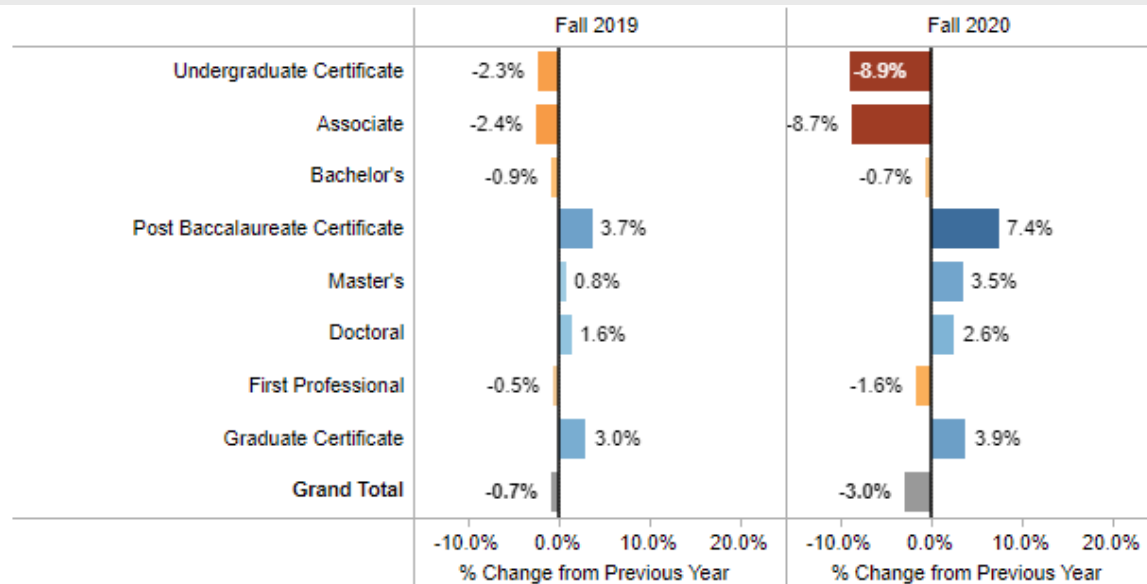
The Post-Pandemic University

- Leading through Uncertainty
- Higher Education Landscape
- Emerging Enrollment Challenges
- Teaching & Learning Reimagined
- Emerging Trends
- Bridging Accessibility and Success Gaps



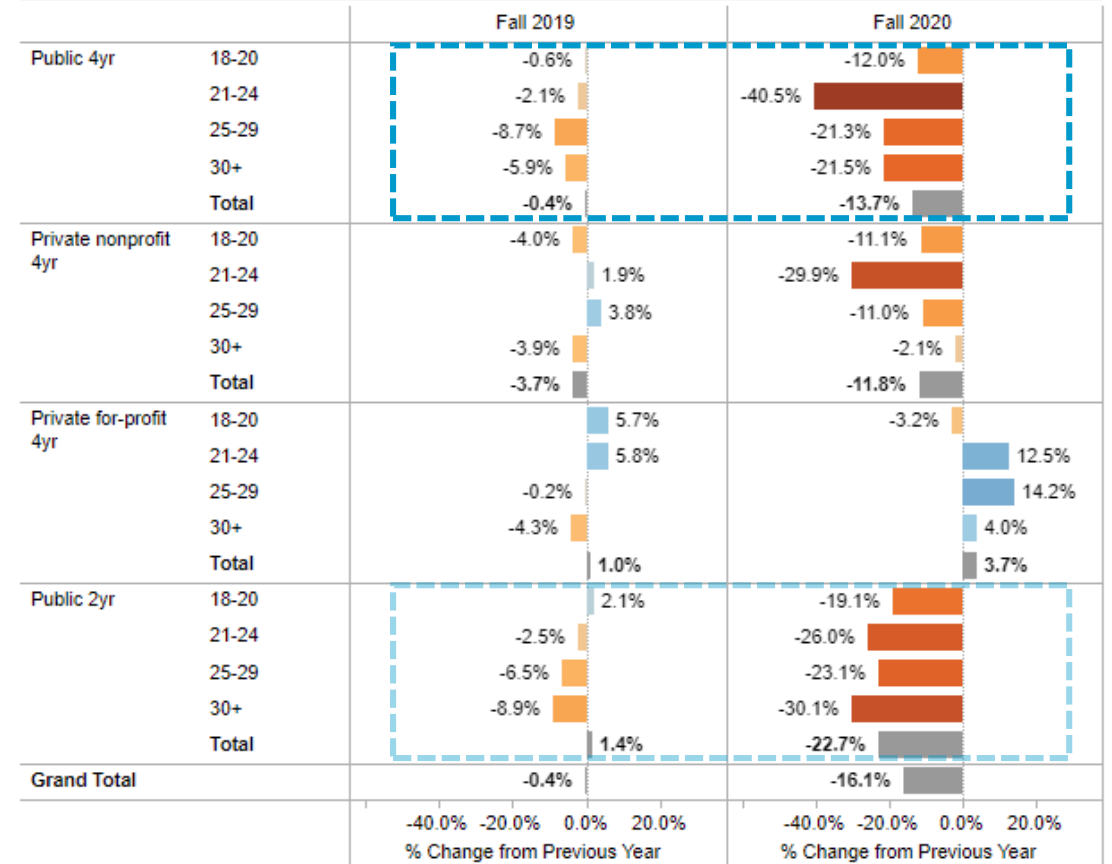
Higher Education Landscape

Enrollment Change by Credential Type (Fall 2019 vs. Fall 2020)




 National Student ClearinghouseSM
 Research CenterSM
 October 15, 2020

FTFT Freshman Enrollment Change by Sector (Fall 2019 vs. Fall 2020)

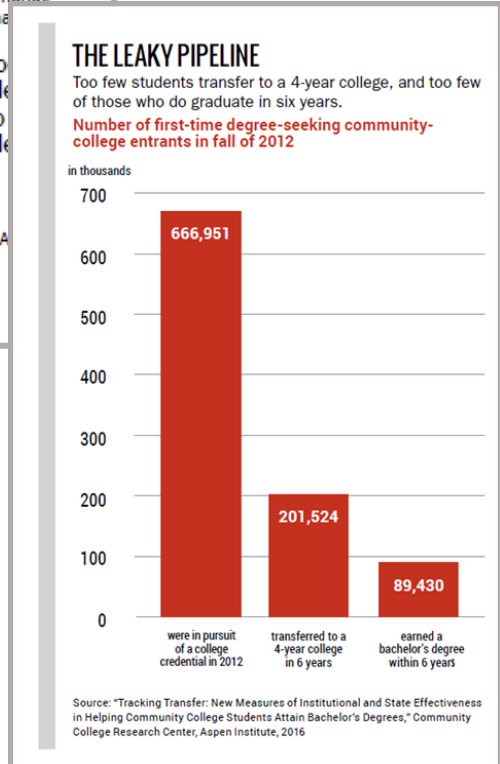
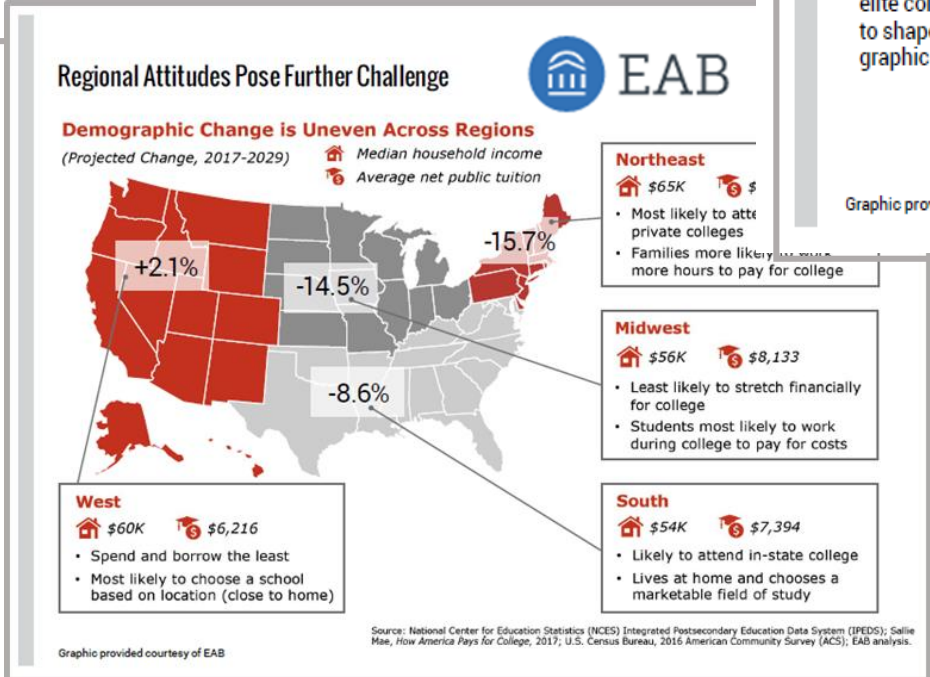
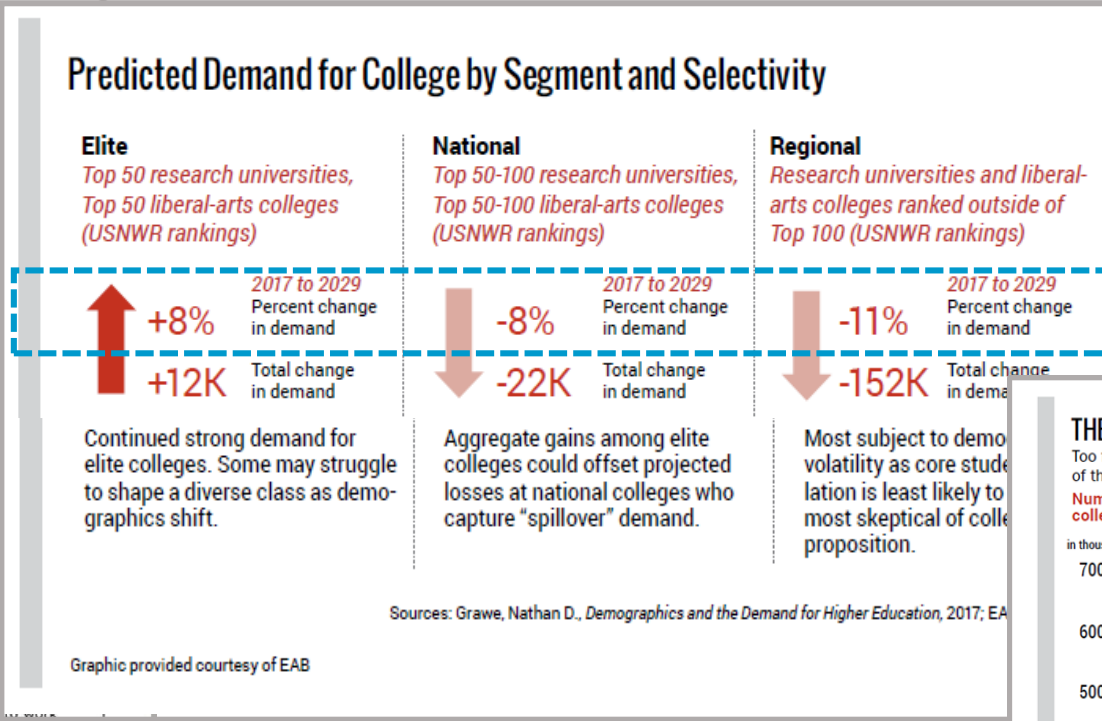
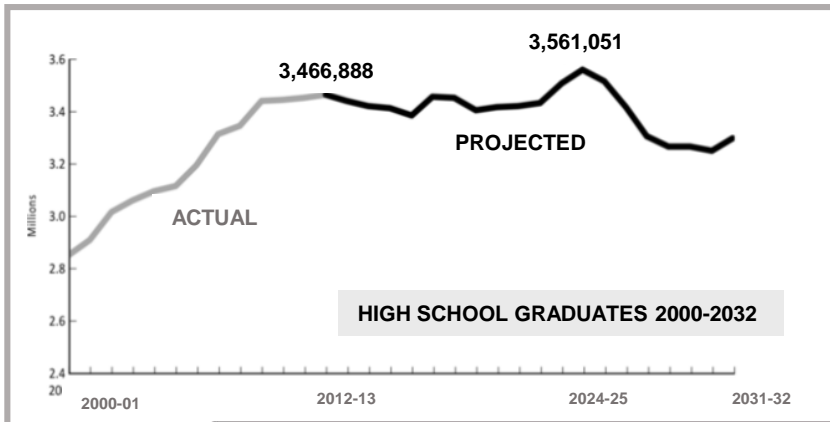


The Post-Pandemic University

- Leading through Uncertainty
- Higher Education Landscape
- **Emerging Enrollment Challenges**
- Teaching & Learning Reimagined
- Emerging Trends
- Bridging Accessibility and Success Gaps



Emerging Enrollment Challenges

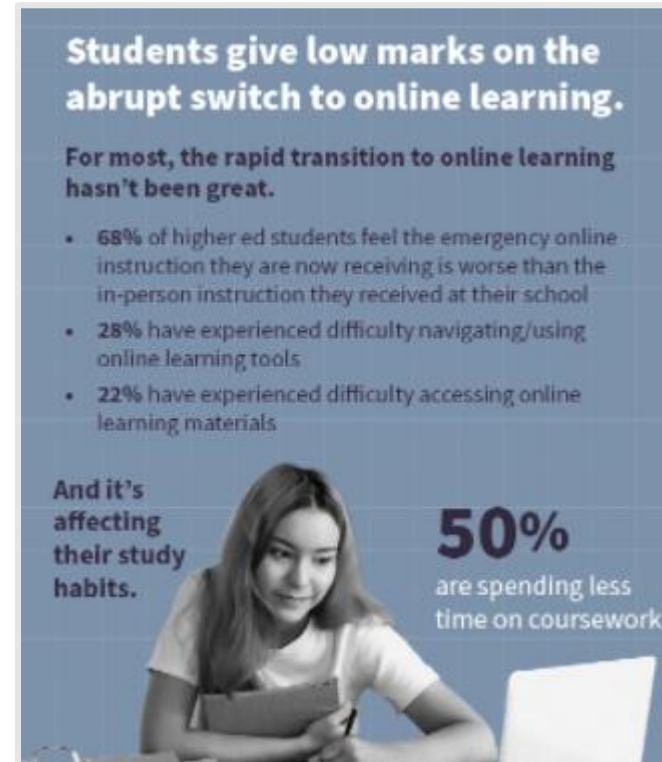
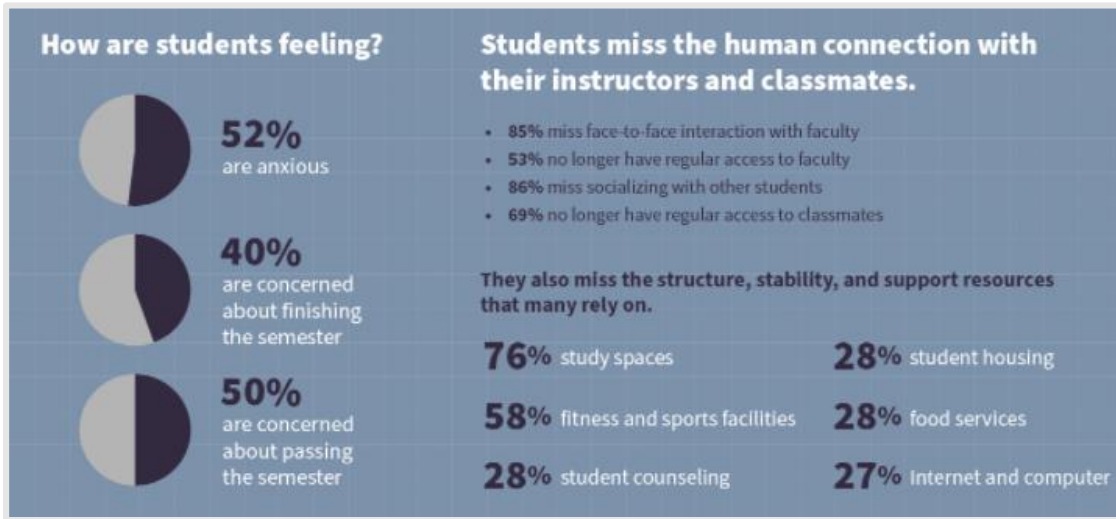


The Post-Pandemic University

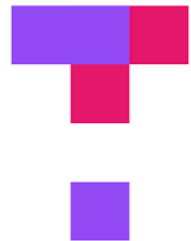
- Leading through Uncertainty
- Higher Education Landscape
- Emerging Enrollment Challenges
- **Teaching & Learning Reimagined**
- Emerging Trends
- Bridging Accessibility and Success Gaps



Teaching & Learning Reimagined



**COVID-19
State of Flux**



TOP HAT
April 2020



Teaching & Learning Reimagined

How are students feeling?



Students miss the human connection with their instructors and classmates.

- 85% miss face-to-face interaction with faculty
- 53% no longer have regular access to faculty
- 86% miss socializing with other students
- 69% no longer have regular access to classmates

They have empathy for the plight of their colleges and professors.

Despite the challenges, students recognize the hard work of their institutions and faculty in responding to the pandemic.

- 70% rated their schools' response as good or excellent
- 66% rated their profs' response as good or excellent

However, there is room for improvement.

25%

say their opinion of their school has gotten worse during this crisis



computer

Students give low marks on the abrupt switch to online learning.

For most, the rapid transition to online learning hasn't been great.

- 68% of higher ed students feel the emergency online instruction they are now receiving is worse than the in-person instruction they received at their school
- 28% have experienced difficulty navigating/using online learning tools
- 22% have experienced difficulty accessing online learning materials

And it's affecting their study habits.



50%

are spending less

Students are missing out on classroom engagement.

Engagement plays a major role in ensuring students feel like they are deriving value from their education.

78% say the online class experience is unengaging



Of these students:

- 53% are spending less time on coursework
- 39% don't enjoy or see the value in real-time online learning
- 75% think online instruction is worse than in-person instruction

Spending time with faculty and fellow students is important to them as well.

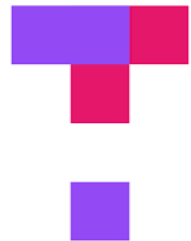
75% miss face-to-face interaction with faculty and students



Of these students:

- 52% are spending less time on coursework
- 38% don't enjoy or see the value in real-time online learning
- 76% think online instruction is worse than in-person instruction

**COVID-19
State of Flux**



TOP HAT
April 2020

The Post-Pandemic University

- Leading through Uncertainty
- Higher Education Landscape
- Emerging Enrollment Challenges
- **Teaching & Learning Reimagined**
- Emerging Trends
- Bridging Accessibility and Success Gaps



The Post-Pandemic University

- Leading through Uncertainty
- Higher Education Landscape
- Emerging Enrollment Challenges
- Teaching & Learning Reimagined
- Emerging Trends
- Bridging Accessibility and Success Gaps



The Post-Pandemic University

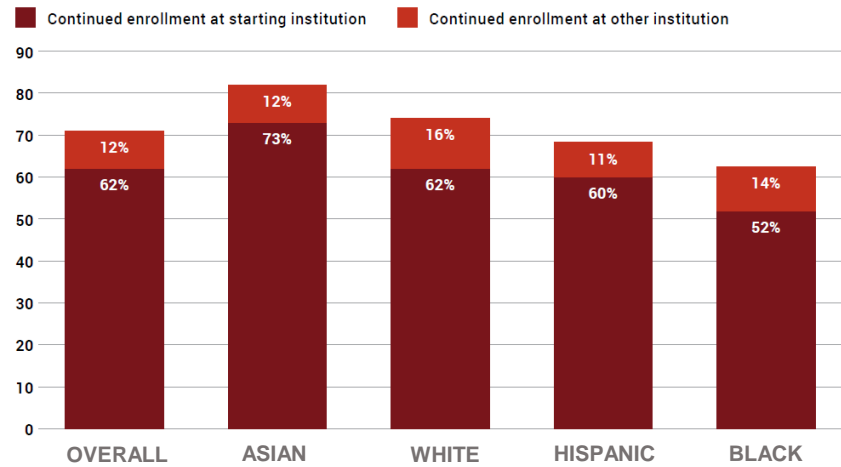
- Leading through Uncertainty
- Higher Education Landscape
- Emerging Enrollment Challenges
- Teaching & Learning Reimagined
- Emerging Trends
- Bridging Accessibility and Success Gaps



Bridging Accessibility and Success Gaps

First-Year Persistence and Retention

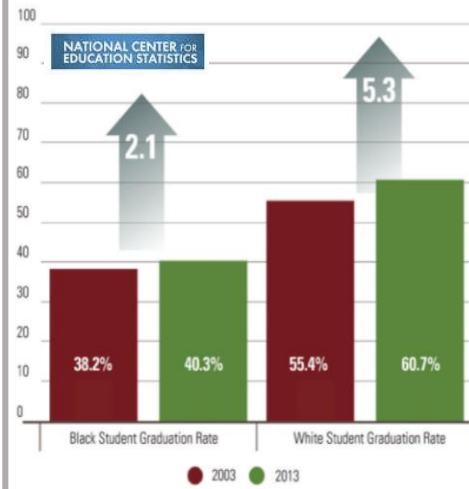
Among students who entered college for the first time in fall 2017, Black students had the lowest persistence rate, and just over half of Black students returned to the starting institution.



Source: National Student Clearinghouse Research Center



Change in 6-year Graduation Rate at Four-Year, Public Institutions (2003-13)



NATIONAL CENTER FOR EDUCATION STATISTICS

● 2003 ● 2013

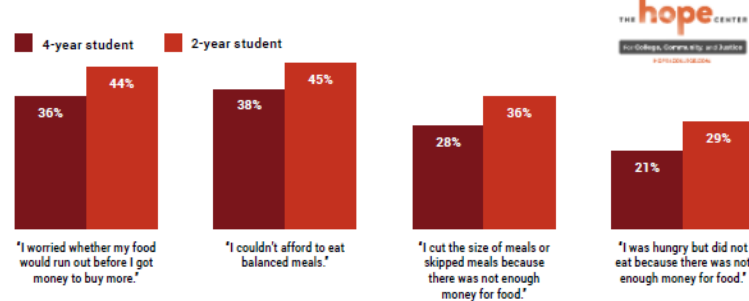
Completion Rates Among Pell and Non-Pell Eligible Students

CAP

Institution type	First-time, full-time students	First-time, part-time students
Public four-year colleges	-16.4%	-6.8%
Public two-year colleges	-7.3%	1.7%
Private four-year colleges	-20.7%	-2.6%
For-profit colleges	-0.3%	-0.3%

Percent of Students Dealing with Food Insecurity by Type of Institution

A significant percentage of students experience food insecurity, especially at 2-year colleges.

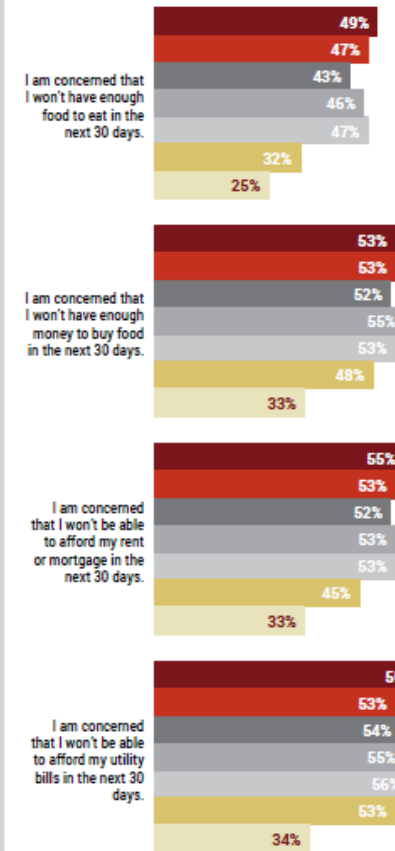


Source: The Hope Center for College, Community, and Justice



Student Food and Housing Insecurities, by Race/Ethnicity

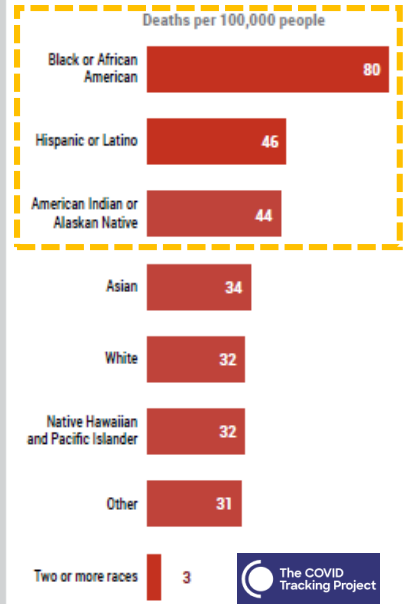
- American Indian or Alaskan native
- Asian or Asian American
- Black or African American
- Hispanic, Latino, Latina, or Latinx
- Middle Eastern or North African
- Native Hawaiian or Other Pacific islander
- White



Source: Ithaka S+R, "Student Experiences During the Pandemic Pivot," (2020).

Covid Deaths by Race or Ethnicity

By mid-August 2020, over 30,000 Black lives had been lost to Covid-19. Nationwide, Black people are dying at 2.4 times the rate of white people.



Source: The Covid Racial Data Tracker, a collaboration between The Atlantic's Covid Tracking Project and the Boston University Center for Antiracist Research.



The Post-Pandemic University

- Leading through Uncertainty
- Higher Education Landscape
- Emerging Enrollment Challenges
- Teaching & Learning Reimagined
- Emerging Trends
- Bridging Accessibility and Success Gaps



Additional Thoughts ?